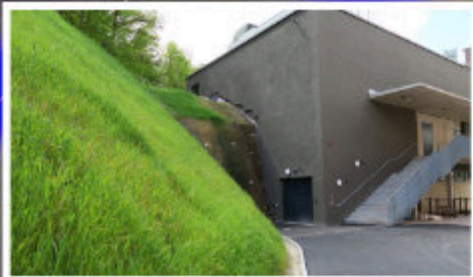


VENUE SPECS



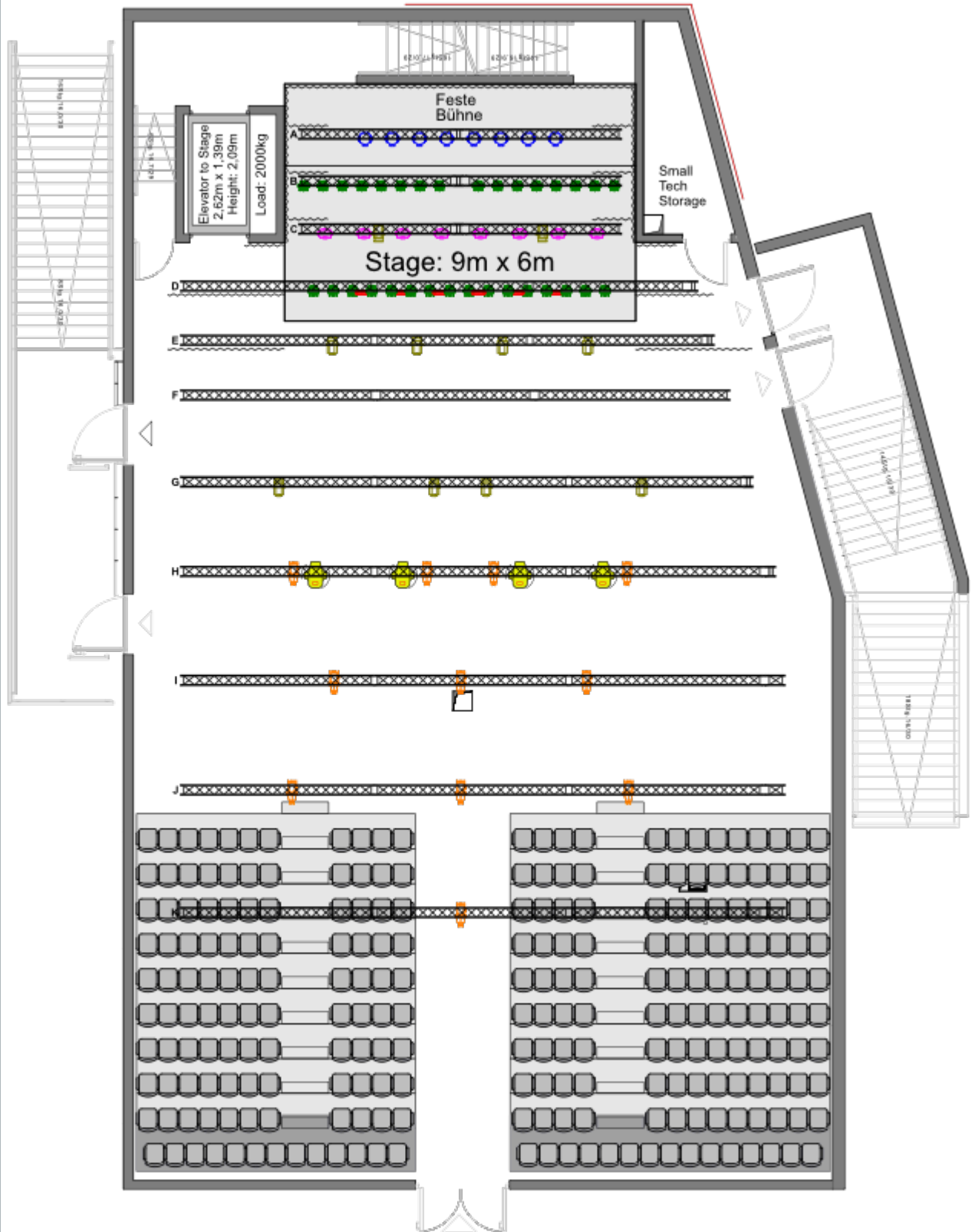
suehous SAAL










Address	<p>Sudhaus e.V. Hechingerstr. 203 72072 Tübingen</p> <p>Tel: +49 7071 - 74696 mail@sudhaus-tuebingen.de www.sudhaus-tuebingen.de</p> <ul style="list-style-type: none"> • General Manager: Adalbert Sedlmeier • Booking & Production Manager: Raoul Paslaru paslaru@sudhaus-tuebingen.de • Technical Manager: Tobi Müller technik@sudhaus-tuebingen.de Tel.: +49-176 61815515
Loading	<p>10m to stage with elevator, no stairs (height limit for trucks: 3,60m) Elevator: 2,62m(l) x 1,39m(w) x 2,09m(h) - Load: 2000kg</p>
Parking	<p>Car/Van: You can park right next to the venue (space for 1 truck or 2 car/van), more parking lots are available</p> <p>Nightliner: Seperate parking lot, 50m to venue, 1x 32A CEE power</p>
Venue	<p>Size: 24m(l) x 18m(w)</p> <p>Capacity: up to 800 standing <u>OR</u> 460 sitting (incl. tribune)</p> <p>Tribune: 244 seats on 2 blocks, movable</p> <p>Piano: 1x Bechstein Grand Piano (270cm, build ca.1920, restored by Banjiko)</p> <p>Lift: 1x electric scissor lift (Platform: 1,64m x 0,75m; load: 227kg)</p>
Stage	<p>Size: 9m(w) x 6m(d) x 1m(h) (other sizes possible on request)</p> <p>Clearance: 5,32m (on stage)</p> <p>Riser: scissor platforms (2x1m) are available</p>
Backstage	<p>3 dressing rooms</p> <p>2 toilets and 2 showers</p> <p>1 washer (no dryer)</p> <p>WiFi and LAN</p>

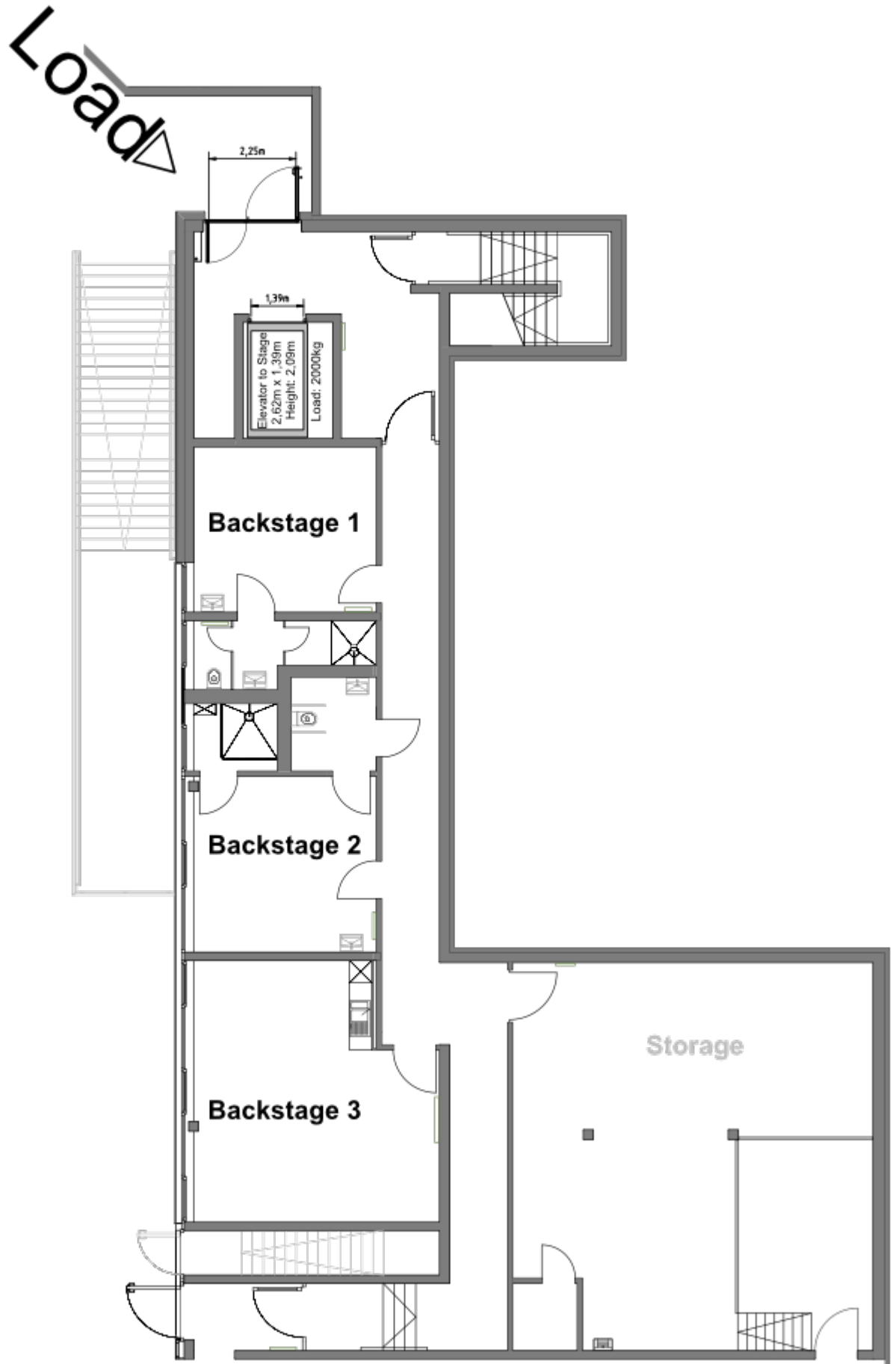
<p>Power</p>	<p>Stage left: 1x 63A / 32A / 16A CEE(red) & 3x 16A Schuko Stage right: 1x 63A / 32A / 16A CEE(red) & 3x 16A Schuko FOH: 1x 16A CEE(red), 3x 16A Schuko Amp-Room: 2x 32A CEE(red)</p>
<p>Multicore</p>	<p>8x Ethercon RJ45 (CAT 6a), 12x XLR (110 Ω), 5x BNC (75 Ω)</p>
<p>Sound</p>	<p>PA: 16x Seeburg Galeo C (Two-Way LineArray, 2x8"/1,4") 12x Seeburg 1801 (Sub-Array, 1x18") 4x Seeburg A3 (Nearfill, 2x8"/1")</p> <p>Monitor: 12x Seeburg X8 (Coaxial, 15"/1,4") 1x Seeburg 1801 Sub (1x18")</p> <p>Amping: Crown iTech HD 4x3500 & HD12000 (10 amp-channels for monitors)</p> <p>Consoles: 2x Soundcraft Vi3000 with 1x Vi Stagebox (64x Mic In)</p> <p>Wireless: 1x Shure ULXD-4D (Dual-Channel Digital Wireless Receiver) with 2x handheld and 2x bodypack transmitters</p> <p>Mics: Shure: SM 57 & 58; Beta 58A, 57A, 52A & 91 Sennheiser: MD421, e904 & e906 dpa: d:vote 4099 with mounts/clips ElectroVoice: RE20</p>
<p>Lights</p>	<p>Attention: Please provide at least one aux or better matrix for our hearing loop</p> <p>Console: MA Lighting GrandMA 3 light DMX: via ArtNet or sACN</p> <p><u>Hanging (positions see next site):</u></p> <p>Moving heads: 8x JB Varyscan P7 (CMY LED Spot) 8x JB Sparx 7 (RGBW Zoom Wash) 4x JB P10 (CMY LED Profiler)</p> <p>LED: 32x Expolite MC120 (120W RGBW + Zoom)</p> <p>Ambient: 15x Expolite MC120 (120W RGBW + Zoom)</p> <p>Conventional: 10x Robert Juliat 1,2kW (Fresnel) 11x ETC Source4 Zoom 25-50° (Profile) 6x DTS 2-Light (Blinder)</p> <p><u>Floor/Optional:</u></p> <p>Hazer: 2x SmokeFactory TourHazer2</p> <p>LED: 5x Expolite MC120 (120W RGBW + Zoom) 4x Expolite MC60 (60W RGBW + Zoom)</p> <p>Moving heads: 4x JB P10 (CMY LED Profiler)</p>

Venue



- | | |
|---|--|
|  Robert Juliat 1,2kW (Fresnel) |  Expolite MC120 (RGBW + Zoom) |
|  ETC Source4 Zoom 25-50° (Profile) |  JB Varyscan P7 (CMY Led Spot) |
|  DTS 2-Light (Blinder) |  JB Sparx 7 (RGBW Zoom Wash) |
|  JB P10 (CMY LED Profiler) | |

Backstage



DMX-Patch 1

Layer	Name	FixtureType	Patch
Fresnel	Fresnel 1	2 Dimmer 00 (2)	1.001
Fresnel	Fresnel 2	2 Dimmer 00 (2)	1.002
Fresnel	Fresnel 3	2 Dimmer 00 (2)	1.003
Fresnel	Fresnel 4	2 Dimmer 00 (2)	1.004
Fresnel	Fresnel 5	2 Dimmer 00 (2)	1.005
Fresnel	Fresnel 6	2 Dimmer 00 (2)	1.006
Fresnel	Fresnel 7	2 Dimmer 00 (2)	1.007
Fresnel	Fresnel 8	2 Dimmer 00 (2)	1.008
Fresnel	Fresnel 9	2 Dimmer 00 (2)	1.009
Fresnel	Fresnel 10	2 Dimmer 00 (2)	1.010
Profile	Profile 1	2 Dimmer 00 (2)	1.011
Profile	Profile 2	2 Dimmer 00 (2)	1.012
Profile	Profile 3	2 Dimmer 00 (2)	1.013
Profile	Profile 4	2 Dimmer 00 (2)	1.014
Profile	Profile 5	2 Dimmer 00 (2)	1.015
Profile	Profile 6	2 Dimmer 00 (2)	1.016
Profile	Profile 7	2 Dimmer 00 (2)	1.017
Profile	Profile 8	2 Dimmer 00 (2)	1.018
Profile	Profile 9	2 Dimmer 00 (2)	1.019
Profile	Profile 10	2 Dimmer 00 (2)	1.020
Profile	Profile 11	2 Dimmer 00 (2)	1.021
Blinder	Blind 1	2 Dimmer 00 (2)	1.022
Blinder	Blind 2	2 Dimmer 00 (2)	1.023
Blinder	Blind 3	2 Dimmer 00 (2)	1.024
Blinder	Blind 4	2 Dimmer 00 (2)	1.025
Blinder	Blind 5	2 Dimmer 00 (2)	1.026
Blinder	Blind 6	2 Dimmer 00 (2)	1.027
Spare	Spare 1	2 Dimmer 00 (2)	1.028
Spare	Spare 2	2 Dimmer 00 (2)	1.029
Spare	Spare 3	2 Dimmer 00 (2)	1.030
Spare	Spare 4	2 Dimmer 00 (2)	1.031
Spare	Spare 5	2 Dimmer 00 (2)	1.032
Spare	Spare 6	2 Dimmer 00 (2)	1.033
Spare	Spare 7	2 Dimmer 00 (2)	1.034
Spare	Spare 8	2 Dimmer 00 (2)	1.035
Spare	Spare 9	2 Dimmer 00 (2)	1.036
Floors	Floor MC60 1	4 TourLED MC60 SSP (4)	1.037
Floors	Floor MC60 2	4 TourLED MC60 SSP (4)	1.046
Floors	Floor MC60 3	4 TourLED MC60 SSP (4)	1.055
Floors	Floor MC60 4	4 TourLED MC60 SSP (4)	1.064
Floors	Floor MC120 1	3 TourLED MC120 SSP (3)	1.082
Floors	Floor MC120 2	3 TourLED MC120 SSP (3)	1.091
Floors	Floor MC120 3	3 TourLED MC120 SSP (3)	1.100
Floors	Floor MC120 4	3 TourLED MC120 SSP (3)	1.109
Floors	Floor MC120 5	3 TourLED MC120 SSP (3)	1.118
Floors	Floor Side L 1	4 TourLED MC60 SSP (4)	1.127
Floors	Floor Side L 2	4 TourLED MC60 SSP (4)	1.136
Floors	Floor Side L 3	4 TourLED MC60 SSP (4)	1.145
Floors	Floor Side R 1	4 TourLED MC60 SSP (4)	1.154
Floors	Floor Side R 2	4 TourLED MC60 SSP (4)	1.163
Floors	Floor Side R 3	4 TourLED MC60 SSP (4)	1.172

DMX-Patch 2

Layer	Name	FixtureType	Patch
Floors	P10 (Optional Profiler)	9 P10 Profile HC Mode 1 (9)	1.185
Floors	P10 (Optional Profiler)	9 P10 Profile HC Mode 1 (9)	1.225
Floors	P10 (Optional Profiler)	9 P10 Profile HC Mode 1 (9)	1.265
Floors	P10 (Optional Profiler)	9 P10 Profile HC Mode 1 (9)	1.305
Hazer	Hazer-1	5 Tour Hazer II 00 (5)	1.181
Hazer	Hazer-2	5 Tour Hazer II 00 (5)	1.183
Tribuehne	Stairs 1	2 Dimmer 00 (2)	1.510
Tribuehne	Stairs 2	2 Dimmer 00 (2)	1.511
P7	P7 1	6 P7 Mode 3 - Pan Tilt 16 bit (6)	2.001
P7	P7 2	6 P7 Mode 3 - Pan Tilt 16 bit (6)	2.025
P7	P7 3	6 P7 Mode 3 - Pan Tilt 16 bit (6)	2.049
P7	P7 4	6 P7 Mode 3 - Pan Tilt 16 bit (6)	2.073
P7	P7 5	6 P7 Mode 3 - Pan Tilt 16 bit (6)	2.097
P7	P7 6	6 P7 Mode 3 - Pan Tilt 16 bit (6)	2.121
P7	P7 7	6 P7 Mode 3 - Pan Tilt 16 bit (6)	2.145
P7	P7 8	6 P7 Mode 3 - Pan Tilt 16 bit (6)	2.169
Mc120 Tr. B	mc120 B 1	3 TourLED MC120 SSP (3)	2.193
Mc120 Tr. B	mc120 B 2	3 TourLED MC120 SSP (3)	2.202
Mc120 Tr. B	mc120 B 3	3 TourLED MC120 SSP (3)	2.211
Mc120 Tr. B	mc120 B 4	3 TourLED MC120 SSP (3)	2.220
Mc120 Tr. B	mc120 B 5	3 TourLED MC120 SSP (3)	2.229
Mc120 Tr. B	mc120 B 6	3 TourLED MC120 SSP (3)	2.238
Mc120 Tr. B	mc120 B 7	3 TourLED MC120 SSP (3)	2.247
Mc120 Tr. B	mc120 B 8	3 TourLED MC120 SSP (3)	2.256
Mc120 Tr. B	mc120 B 9	3 TourLED MC120 SSP (3)	2.265
Mc120 Tr. B	mc120 B 10	3 TourLED MC120 SSP (3)	2.274
Mc120 Tr. B	mc120 B 11	3 TourLED MC120 SSP (3)	2.283
Mc120 Tr. B	mc120 B 12	3 TourLED MC120 SSP (3)	2.292
Mc120 Tr. B	mc120 B 13	3 TourLED MC120 SSP (3)	2.301
Mc120 Tr. B	mc120 B 14	3 TourLED MC120 SSP (3)	2.310
Mc120 Tr. B	mc120 B 15	3 TourLED MC120 SSP (3)	2.319
Mc120 Tr. B	mc120 B 16	3 TourLED MC120 SSP (3)	2.328
Sparx 7	S7 1	7 Sparx7 Mode 3 - 16 Bit (7)	3.001
Sparx 7	S7 2	7 Sparx7 Mode 3 - 16 Bit (7)	3.025
Sparx 7	S7 3	7 Sparx7 Mode 3 - 16 Bit (7)	3.049
Sparx 7	S7 4	7 Sparx7 Mode 3 - 16 Bit (7)	3.073
Sparx 7	S7 5	7 Sparx7 Mode 3 - 16 Bit (7)	3.097
Sparx 7	S7 6	7 Sparx7 Mode 3 - 16 Bit (7)	3.121
Sparx 7	S7 7	7 Sparx7 Mode 3 - 16 Bit (7)	3.145
Sparx 7	S7 8	7 Sparx7 Mode 3 - 16 Bit (7)	3.169

DMX-Patch 3

Layer	Name	FixtureType	Patch
Mc120 Tr. D	mc120 D 1	3 TourLED MC120 SSP (3)	3.193
Mc120 Tr. D	mc120 D 2	3 TourLED MC120 SSP (3)	3.202
Mc120 Tr. D	mc120 D 3	3 TourLED MC120 SSP (3)	3.211
Mc120 Tr. D	mc120 D 4	3 TourLED MC120 SSP (3)	3.220
Mc120 Tr. D	mc120 D 5	3 TourLED MC120 SSP (3)	3.229
Mc120 Tr. D	mc120 D 6	3 TourLED MC120 SSP (3)	3.238
Mc120 Tr. D	mc120 D 7	3 TourLED MC120 SSP (3)	3.247
Mc120 Tr. D	mc120 D 8	3 TourLED MC120 SSP (3)	3.256
Mc120 Tr. D	mc120 D 9	3 TourLED MC120 SSP (3)	3.265
Mc120 Tr. D	mc120 D 10	3 TourLED MC120 SSP (3)	3.274
Mc120 Tr. D	mc120 D 11	3 TourLED MC120 SSP (3)	3.283
Mc120 Tr. D	mc120 D 12	3 TourLED MC120 SSP (3)	3.292
Mc120 Tr. D	mc120 D 13	3 TourLED MC120 SSP (3)	3.301
Mc120 Tr. D	mc120 D 14	3 TourLED MC120 SSP (3)	3.310
Mc120 Tr. D	mc120 D 15	3 TourLED MC120 SSP (3)	3.319
Mc120 Tr. D	mc120 D 16	3 TourLED MC120 SSP (3)	3.328
Mc120 Ambient	Mc60 5	3 TourLED MC120 SSP (3)	4.037
Mc120 Ambient	Mc60 6	3 TourLED MC120 SSP (3)	4.046
Mc120 Ambient	Mc60 7	3 TourLED MC120 SSP (3)	4.055
Mc120 Ambient	Mc60 8	3 TourLED MC120 SSP (3)	4.064
Mc120 Ambient	Mc60 9	3 TourLED MC120 SSP (3)	4.073
Mc120 Ambient	Mc60 10	3 TourLED MC120 SSP (3)	4.082
Mc120 Ambient	Mc60 11	3 TourLED MC120 SSP (3)	4.091
Mc120 Ambient	Mc60 12	3 TourLED MC120 SSP (3)	4.100
Mc120 Ambient	Mc60 13	3 TourLED MC120 SSP (3)	4.109
Mc120 Ambient	Mc60 14	3 TourLED MC120 SSP (3)	4.118
Mc120 Ambient	Mc60 15	3 TourLED MC120 SSP (3)	4.127
Mc120 Ambient	Mc60 16	3 TourLED MC120 SSP (3)	4.136
Mc120 Ambient	Mc60 17	3 TourLED MC120 SSP (3)	4.145
Mc120 Ambient	Mc60 18	3 TourLED MC120 SSP (3)	4.154
Mc120 Ambient	Mc60 19	3 TourLED MC120 SSP (3)	4.163
P10 Profiler	P10 1	9 P10 Profile HC Mode 1 (9)	4.217
P10 Profiler	P10 2	9 P10 Profile HC Mode 1 (9)	4.257
P10 Profiler	P10 3	9 P10 Profile HC Mode 1 (9)	4.297
P10 Profiler	P10 4	9 P10 Profile HC Mode 1 (9)	4.337
P10 Profiler	P10 (Optional Floor)	9 P10 Profile HC Mode 1 (9)	4.377
P10 Profiler	P10 (Optional Floor)	9 P10 Profile HC Mode 1 (9)	4.417



suehous